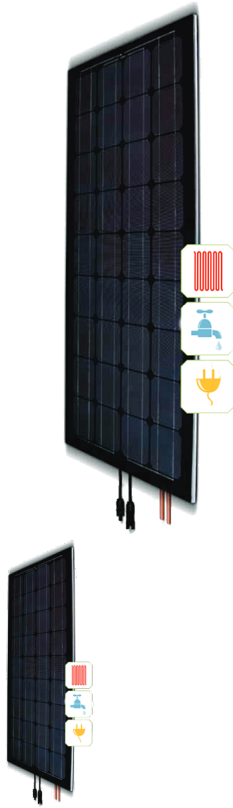


## Solator® PV+THERM Hybridmodule Thermal performance



Solator® PV+THERM Hybridmodule Thermal performance

Rating: Not Rated Yet

[Ask a question about this product](#)

Manufacturer [Solator](#)

### Description

With the power from the sun the solator generates electricity and hot water from one module!

This means double utilisation of the roof or facade surface being built on.

At the same time the unique, compact, frameless structure allows the panel to be gracefully integrated, optically and architecturally, into the building.

1. Solar glass
2. Photovoltaic cells
3. Back sheet
4. Spacer
5. Back panel

- The surface heat from the back sheet is transferred to the fluid
- The photovoltaic performance can be increased by up to 30% as a result of the cooling effect
- The thermal energy is optimally utilised using the heat-exchanger principle

>> Advantges

- Very high efficiency factor due to the double surface utilisation!
  - Uniform appearance due to its aesthetic, compact structure
  - Increase in photovoltaic output due to cooling the cells.
  - Savings on material and installation costs
  - Use can be made of the public subsidies specific to each region Dimension: Module size dependent
- Thermal output: ca. 400 W/m<sup>2</sup>  
Operating pressure: 6 bar  
Flow rates: 90 Liter / h  
Hydraulic connection: Copper tubing D=10mm  
Recommended operating fluid: Water/Glycol  
Intallation height: Inside of the module frame  
Warranty: 10 years leakproff